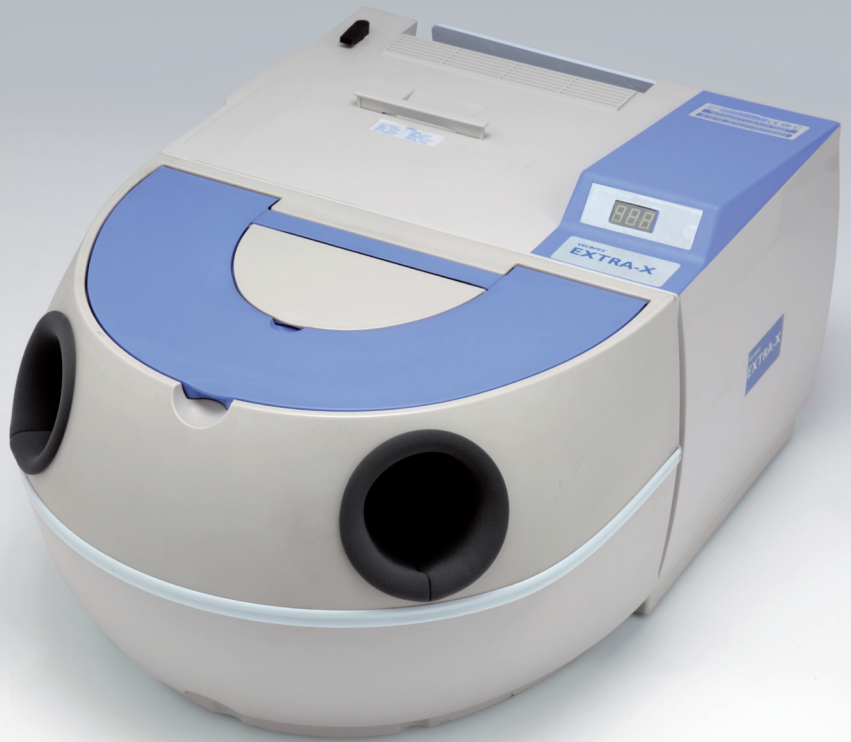
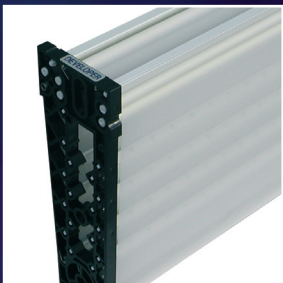
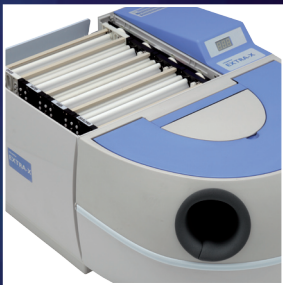


Extra-X

High performance automatic daylight processor for intra-oral and extra-oral x-ray films



The Velopex Extra-X Processor can process all sizes of dental films from size 0 (22x35mm) intra-oral to full skull (24x30cm) Dry-to-Dry in under 5 minutes. The endo-interrupt facility allows intra-oral film (up to size 2, 30x40mm) to be removed (wet) after 2 minutes (after fixer). Unit features: auto-start and digital timer display. It comes with magnetic chemical agitation and a free chemical replenishment system to prolong chemical life.



Daylight loader is optional

DIMENSIONS:	<i>Width:</i>	510mm/20"
	<i>Height:</i>	340mm/13.5"
	<i>Depth:</i>	470mm/18.5" (- daylight loader) 740mm/29" (+ daylight loader)
WEIGHT:	<i>Empty:</i>	21Kg (46¼ lb)
	<i>Full tanks:</i>	27Kg (59½ lb)
TANK CAPACITY:		3.8 Litres/ 6.75 Imp pints each
VOLTAGE:		100-120V, 200-240V (50/60Hz)
CHEMICAL TEMP:	<i>Developer:</i>	25.5°C (77°F)
	<i>Fixer:</i>	27.5°C (81.5°F)

WARM-UP TIME:	10 minutes approx.
FILM FEED SPEED:	470mm (18½") per min
MAX FILM WIDTH:	260mm (10.25")

PROCESSING TIME:	<i>Dry:</i>	5 mins approx.
	<i>Wet:</i>	2.5 mins approx.

COMPLIES WITH: IEC EN 61010-1:2001 (2nd edition)



All our processors work best with Velopex Processing Chemicals



Barretts Green Road,
Harlesden, London NW10 7AP
Tel: +44 (0)20 8965 2913
Fax: +44 (0)20 8963 1270

www.velopex.com